

Decision structure in Brazilian water management: a 2030 agenda perspective



Gesmar Santos and Daniela Nogueira

Joint-project partners:

- ANA (Brazilian Water Agency),
- IPEA (Institute of Applied Economic Research)
- IPC-IG (International Policy Centre for Inclusive Growth)



Water policies evaluation in Brazil in an integrated perspective

National Water Resources Management System - SINGREH

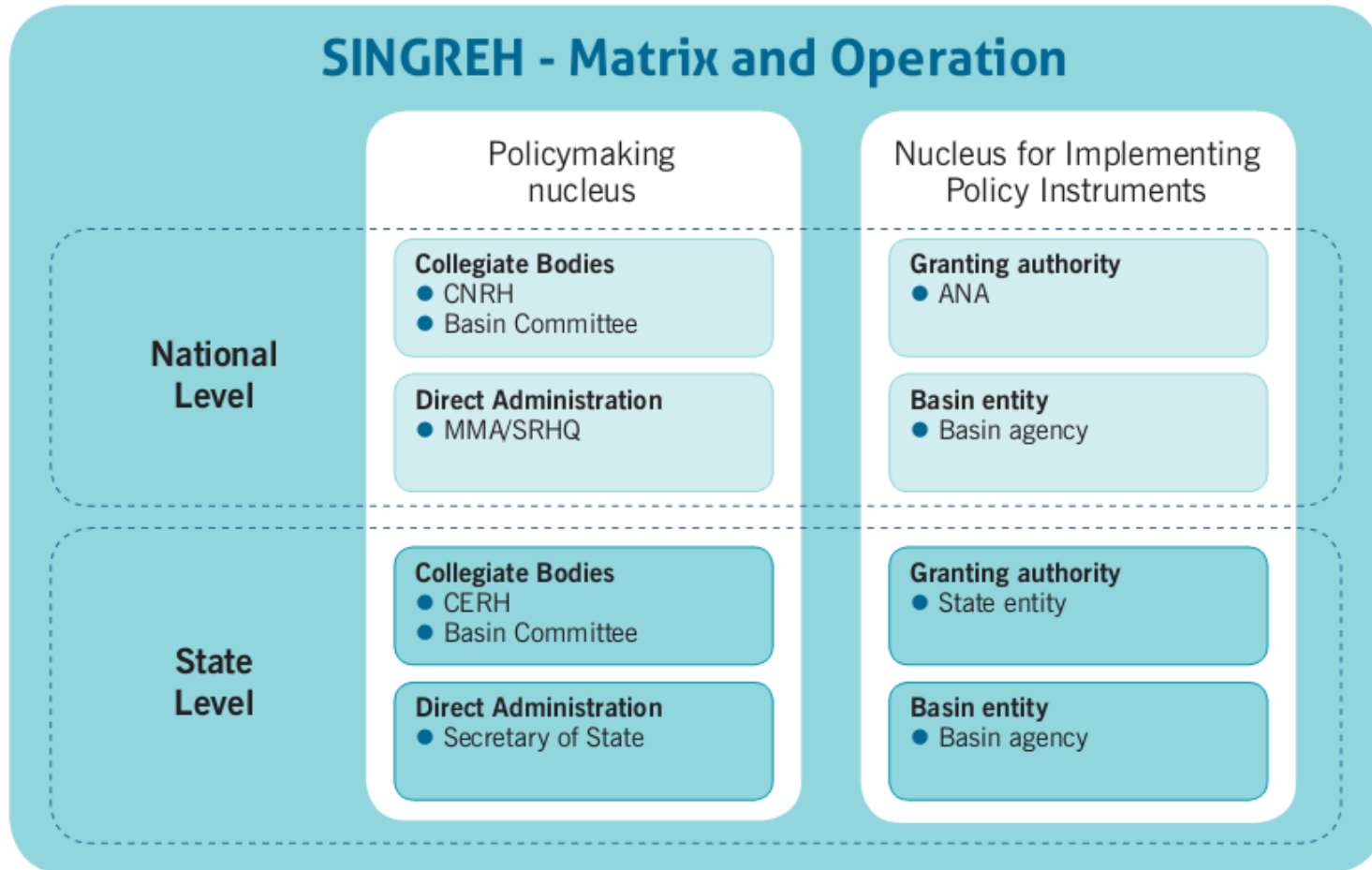
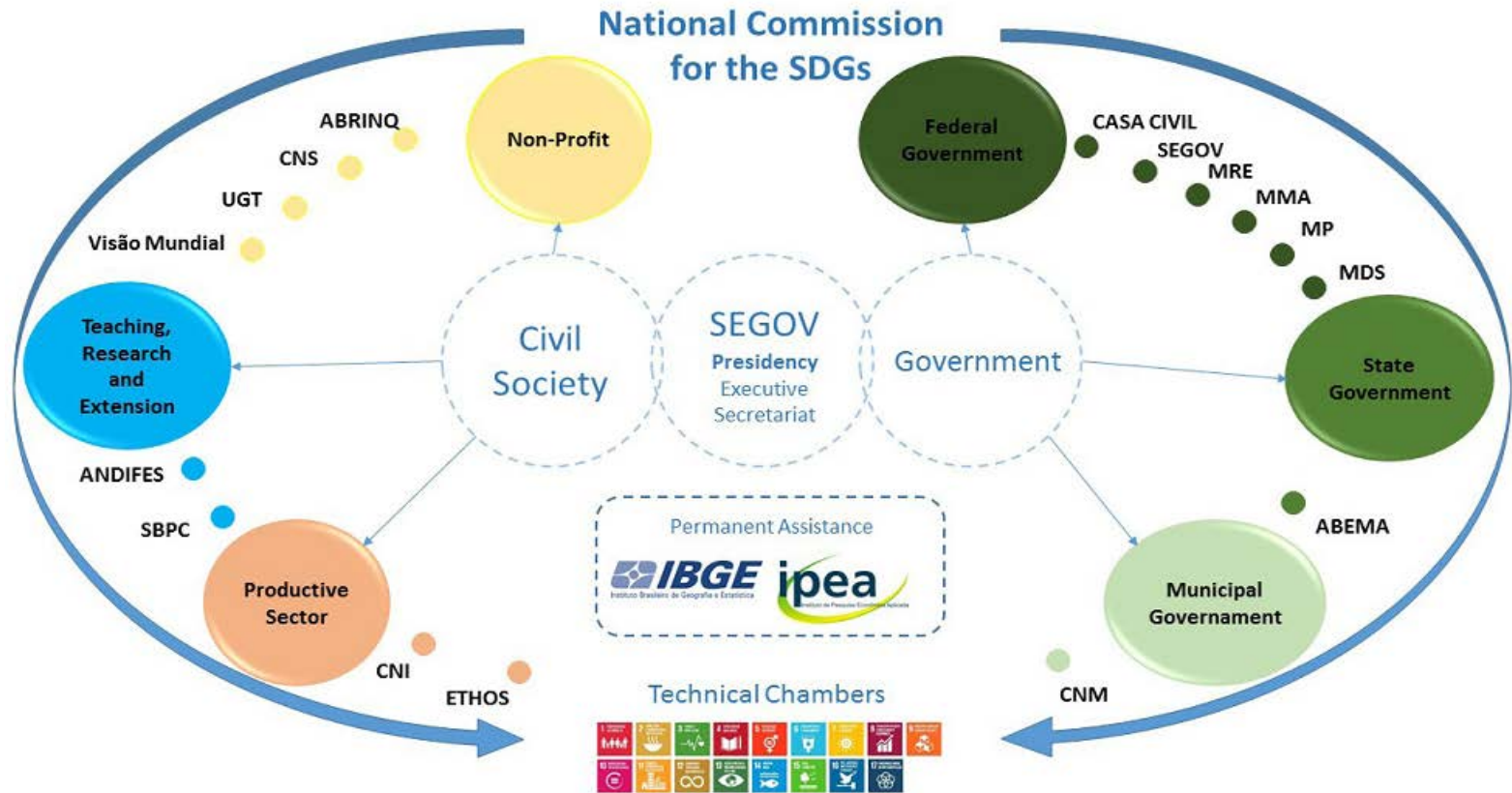


Figure 2 - National Water Resources Management System - SINGREH. Adapted from the Ministry of Environment (MMA) and the National Water Agency (ANA)

Division of power and information systems of water

National Commission for the Agenda 2030 in Brazil



Institutional Framework Source: National Commission for the SDGs (Brasil, 2017)

Main challenges for SDG 6 implementation

- ❑ Political scenario unpredictability – changes in the legal framework;
- ❑ Financial uncertainties;
- ❑ Data reliability;



Doce River mouth (State Espírito Santo) - After spillage of tailings from the Mariana dam (State of Minas Gerais)

Correntina – BA (November 2017)
"When the government fails to act, the population takes action."

Residents of Correntina took to the streets to protest the excessive use of river water in farms.

<http://www.redebrasilatual.com.br/cidadania/2017/11/defesa-da-agua-e-de-comunidades-tradicionais-reuniu-10-mil-em-correntina>

Thank you!
Danielanogueiracds@gmail
Gesmar.santos@ipea.gov.br

